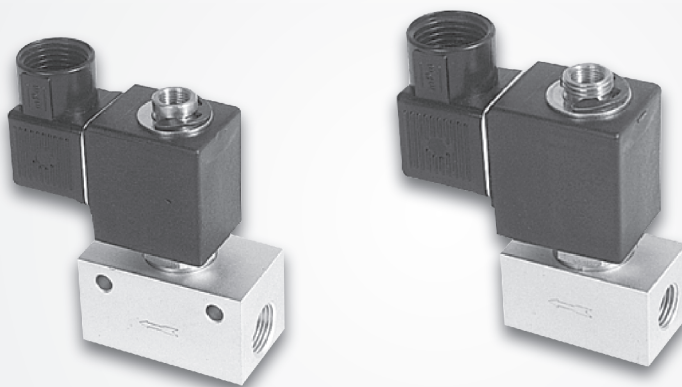


## Features

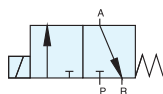
- \* 3/2 way solenoid valve, direct acting for quick and sensitive response.
- \* Large flow rate.
- \* The valve is easy to be installed, which simplifies pipe connection.
- \* Ex-proof coil is available, please refer to page 7-5.



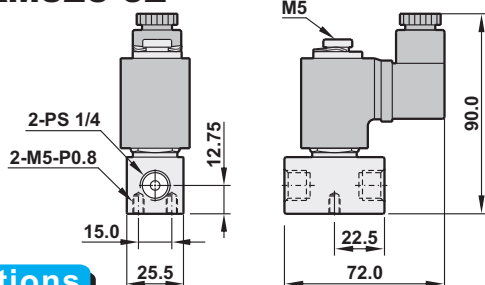
## How to order

<b>AM325</b>	-	<b>02</b>	<b>N</b>	-	<b>S</b>	<b>2</b>	<b>LED</b>	<b>E</b>
<b>AM valve series</b>		<b>Port size</b>	<b>Thread</b>		<b>Solenoid</b>	<b>Voltage</b>	<b>LED</b>	<b>Coil type</b>
3/2 way		02 1/4"	Blank PS		S Single solenoid	1 110VAC	Blank (W/O LED)	Blank DIN
Direct acting		03 3/8"	N NPT			2 220VAC		E Ex-proof
						9 24VDC		

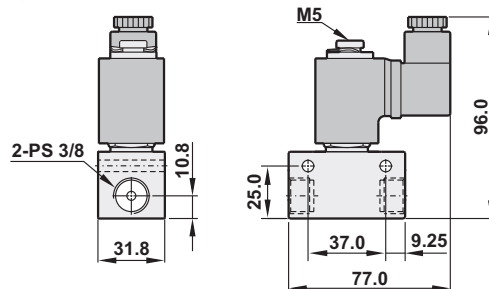
## Dimensions



### AM325-02



### AM325-03

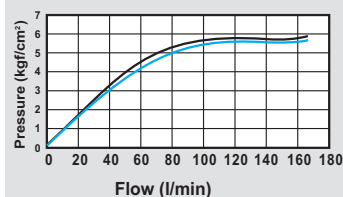


## Specifications

Model	AM325-02-S	AM325-03-S
Port size	1/4"	3/8"
Fluid	Compressed air	
Sectional area	3.8mm <sup>2</sup>	4.2mm <sup>2</sup>
Acting	Direct acting with spring return	
Operating pressure range	0 ~ 6 kgf/cm <sup>2</sup>	
Max. operating pressure	7 kgf/cm <sup>2</sup>	
Ambient temperature	-10°C ~ 50°C	
Duty cycle	100% ED	
Coil type	DIN	
Protection class	IP65 (DIN 40 050)	
Insulation class	F	
Voltage tolerance	±10%	
Standard voltage	220VAC, 110VAC, 24VDC (The other voltage is optional)	
Net weight	270g	370g

## Flow chart

### Model: AM325-02-S



### Model: AM325-03-S

